



SITE DEVELOPMENT PLAN
SCALE NTS

 Republic of the Philippines DEPARTMENT OF SCIENCE AND TECHNOLOGY PHILIPPINE NUCLEAR RESEARCH INSTITUTE COMMONWEALTH AVENUE, DILIMAN, QUEZON CITY	PROJECT TITLE:	SHEET CONTENT/S:	PREPARED BY:	RECOMMENDING APPROVALS:	APPROVED BY:	DRAWN BY:	SHEET NO.
	INNOVATING NUCLEAR MEDICINE RESEARCH AND SERVICES: DEVELOPMENT OF EMERGING PET RADIOPHARMACEUTICALS FOR EARLY CANCER STAGING AND ASSESSMENT OF BIOLOGICAL FUNCTIONS IN CANCER CELLS (C.Y. 2023) PHASE 4	-SITE DEVELOPMENT PLAN	ENGR. ROSALINO B. REJAS <small>SSRS, ESS</small> ENGR. ANDREW C. BARRIDA <small>SSRS, ESS</small>	MARIA TERESA L. BORRAS <small>END-USER/SSRS, ITS</small> ENGR. ARTURO F. SALIH <small>SSRS / OIC-ESS</small> PRECIOSA CORAZON B. PABROA, Ph. D. <small>CHIEF, NSD</small> VALLERIE ANN I. SAMSON, Ph. D. <small>DEPUTY DIRECTOR</small>	CARLO A. ARCILLA, Ph. D. <small>DIRECTOR</small>	CHECKED BY: DATE:	PAGE NO. OF TOTAL NO. OF PAGES OF

GENERAL NOTES:

- ALL WORKS HEREIN SHALL BE DONE ACCORDANCE WITH THE PHILIPPINE ELECTRICAL CODE, NATIONAL BUILDING CODE IMPLEMENTING RULES AND REGULATIONS AND ORDINANCES OF THE LOCAL CODE, FIRE CODE OF THE PHILIPPINES ENFORCING AUTHORITIES AND THE REQUIREMENTS OF THE NFPA CODE
- ALL WORKS HEREIN SHALL BE DONE UNDER THE DIRECT AND IMMEDIATE SUPERVISION OF A DULY QUALIFIED, LICENSED AND EXPERIENCED ELECTRICAL ENGINEER.
- WHENEVER NECESSARY PULLBOX OF PROPER SIZE AND DIMENSION SHALL BE PROVIDED ALTHOUGH NOT INDICATED IN THE PLAN. ALL BOXES SHALL BE PROVIDED WITH METAL PLATE COVER.
- ALL METALLIC CONDUIT, CABINET, BOXES AND EQUIPMENT SHALL BE PROPERLY GROUNDED AND BONDED.
- ALL MATERIALS TO BE USED SHALL BE NEW AND APPROVED FOR THE LOCATION AND PURPOSES.
- ALL CONDUIT, BOXES AND OUTLET SHALL BE PAINTED WITH COLOR RED.
- ALL CAMERAS-LAN SUPPORT IN ALL ELECTRONIC DEVICE INDICATED IN THE BUILDING PLAN SHALL BE RELOCATED AS AFFECTED BY ACTUAL SITE CONDITION.
- THE ELECTRONIC/AUXILIARY SYSTEM CONTRACTOR SHALL PROPERLY COORDINATED IN ANY CHANGES IN THE AUXILIARY SYSTEM LAYOUT AS WELL AS WIRING CONNECTION.
- THE CONTRACTOR SHALL SECURE ALL WIRING PERMITS AND ALL FEES REQUIRED FOR THE WORK AND SHALL FURNISH THE OWNER THROUGH THE ENGINEER, FINAL CERTIFICATES OF INSPECTION AND APPROVAL FROM PROPER GOVERNMENT AUTHORITIES FOR COMPLETED WORK.
- THE CONTRACTOR SHALL REFER TO INTERIOR DESIGN AND ARCHITECTURAL PLAN FOR THE EXACT LOCATION, MOUNTING HEIGHT, SPACING, SPECIFICATIONS AND QUANTITY OF ALL VISIBLE WIRING DEVICES, LIGHTING FIXTURES, SPEAKERS AND PANEL, ETC. IN CASE OF DISCREPANCY, INTERIOR DESIGN/DRAWINGS AND ARCHITECTURAL PLANS SHALL GOVERN.
- THE CONTRACTOR SHALL PROVIDE SHOP DRAWING IN ANY CHANGES IN MOUNTING HEIGHT OR LOCATION FOR THE APPROVAL OF ARCHITECT OR ENGINEER.
- ANY DISCREPANCIES BETWEEN PLANS AND SPECIFICATION, CONFLICT WITH OTHER TRADE OR SITE CONDITION SHALL BE REFER TO ENGINEER AND/OR ARCHITECT.

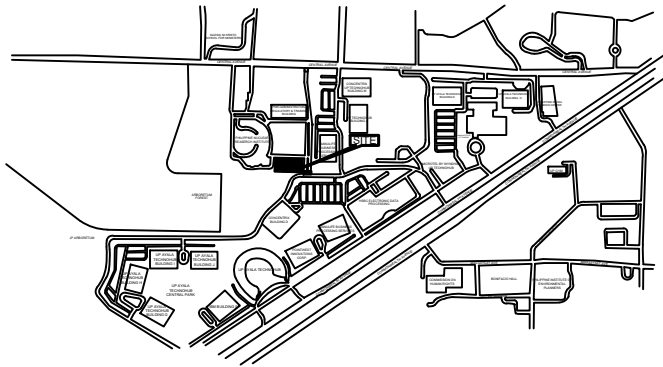
LEGEND AND SYMBOLS:

SYMBOL	MOUNTING	DESCRIPTION
		BULLET TYPE CCTV LETTER 'M' INDICATES FOR CYCLOTRON AND LETTER 'Y' INDICATES FOR PETCT
		DOME TYPE CCTV LETTER 'M' INDICATES FOR CYCLOTRON AND LETTER 'Y' INDICATES FOR PETCT
	300mm ATFL	KEYBOARD ACCESS
	300mm ATFL	AUTOMATIC DOOR LOCK
	300mm ATFL	CONTAMINATION METER PANEL
	300mm ATFL	TRAY/TRAY 02 & 03
		ELECTRICAL MONITORING LETTER 'M' INDICATES FOR PETCT LETTER 'Y' INDICATES FOR CYCLOTRON
		WATER MONITORING LETTER 'Y' INDICATES FOR CYCLOTRON
		FOR EQUIPMENT MONITORING PLC INTERFACE
		FOR AIR & HVAC
	300mm ATFL	TELEPHONE OUTLET LETTER 'M' INDICATES FOR CYCLOTRON AND LETTER 'Y' INDICATES FOR PETCT
	300mm ATFL	LAN OUTLET LETTER 'M' INDICATES FOR CYCLOTRON AND LETTER 'Y' INDICATES FOR PETCT
	YFL	FLOOR MOUNTED TELEPHONE OUTLET LETTER 'Y' INDICATES FOR CYCLOTRON AND LETTER 'Y' INDICATES FOR PETCT
	YFL	FLOOR MOUNTED LAN OUTLET LETTER 'Y' INDICATES FOR CYCLOTRON AND LETTER 'Y' INDICATES FOR PETCT
		OXYGEN PROBE
		NEUTRON PROBE
		GAMMA PROBE

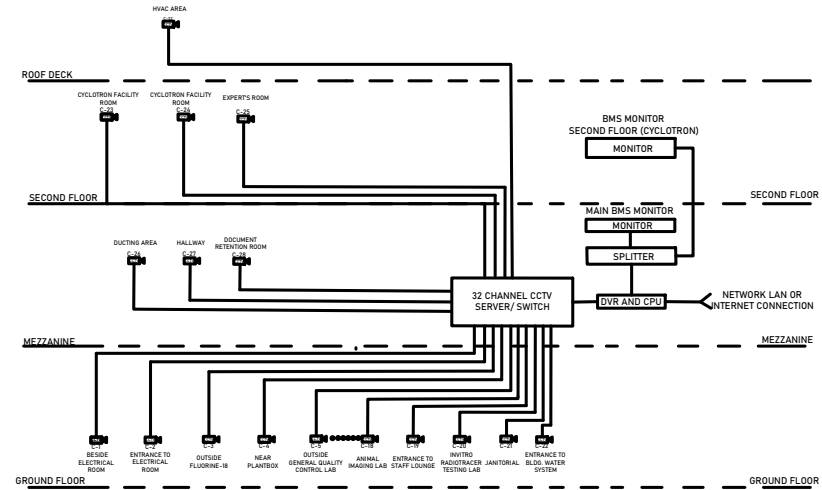
ABBREVIATIONS:

A	ATFL	ABOVE FINISH FLOOR LEVEL	PABX	PRIVATE AUTOMATIC BRANCH EXCHANGE
A	ARE	AIR HANDLING UNIT	PA	PETCT KEYS ARE ACCESS
C	CAT	CATEGORY	PH/PTPE	PETCT TEMPERATURE AND RELATIVE HUMIDITY
C	CCTV	CLOSED-CIRCUIT TELEVISION	PVC	POLYVINYL CHLORIDE
C	CK	CYCLOTRON KEYCARD ACCESS	TRH	TEMPERATURE AND RELATIVE HUMIDITY
C	CH	CYCLOTRON TEMPERATURE AND RELATIVE HUMIDITY		
D	DC	DIRECT CURRENT	V	VOLTS
D	DVR	DIGITAL VIDEO RECORDER	VOIC	VOICE INTERCOM TRUNKLINE
D	DP	DIFFERENTIAL PRESSURE TRANSDUCER		
G	GAMMA	GAMMA PROBE		
L	LAN	LOCAL AREA NETWORK		
N	N	NEUTRON PROBE		
O	O	OXYGEN PROBE		

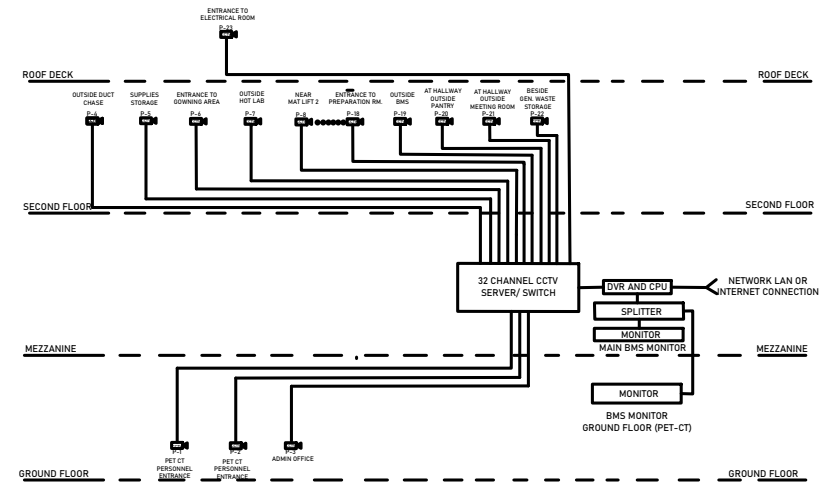
1 LEGENDS, SYMBOLS & GENERAL NOTES
EC-1 SCALE NTS



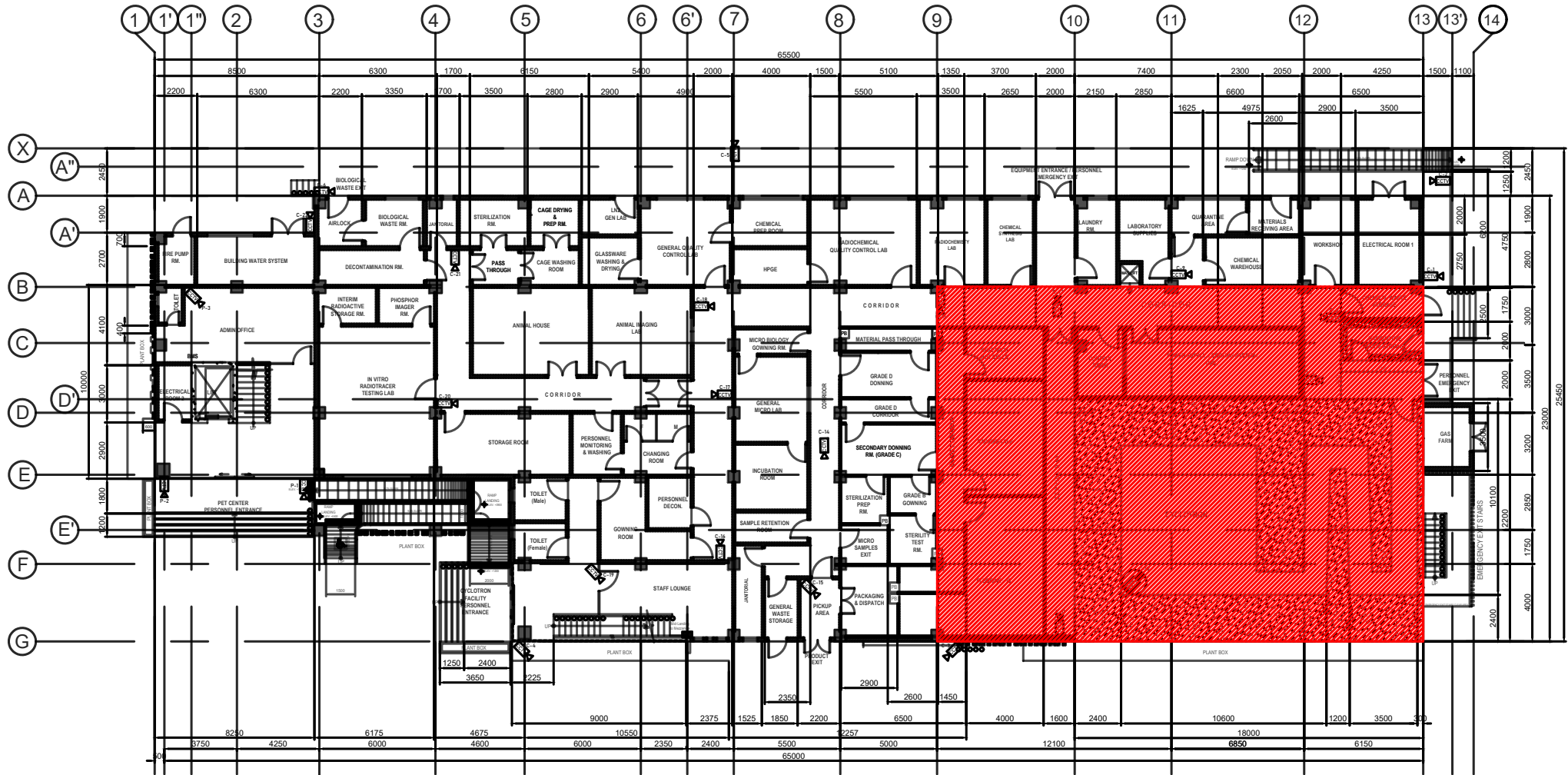
2 LOCATION MAP
EC-1 SCALE NTS



3 CCTV - CYCLOTRON SINGLE LINE DIAGRAM
EC-1 SCALE NTS

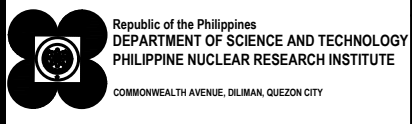


4 CCTV - PET CT SINGLE LINE DIAGRAM
EC-1 SCALE NTS

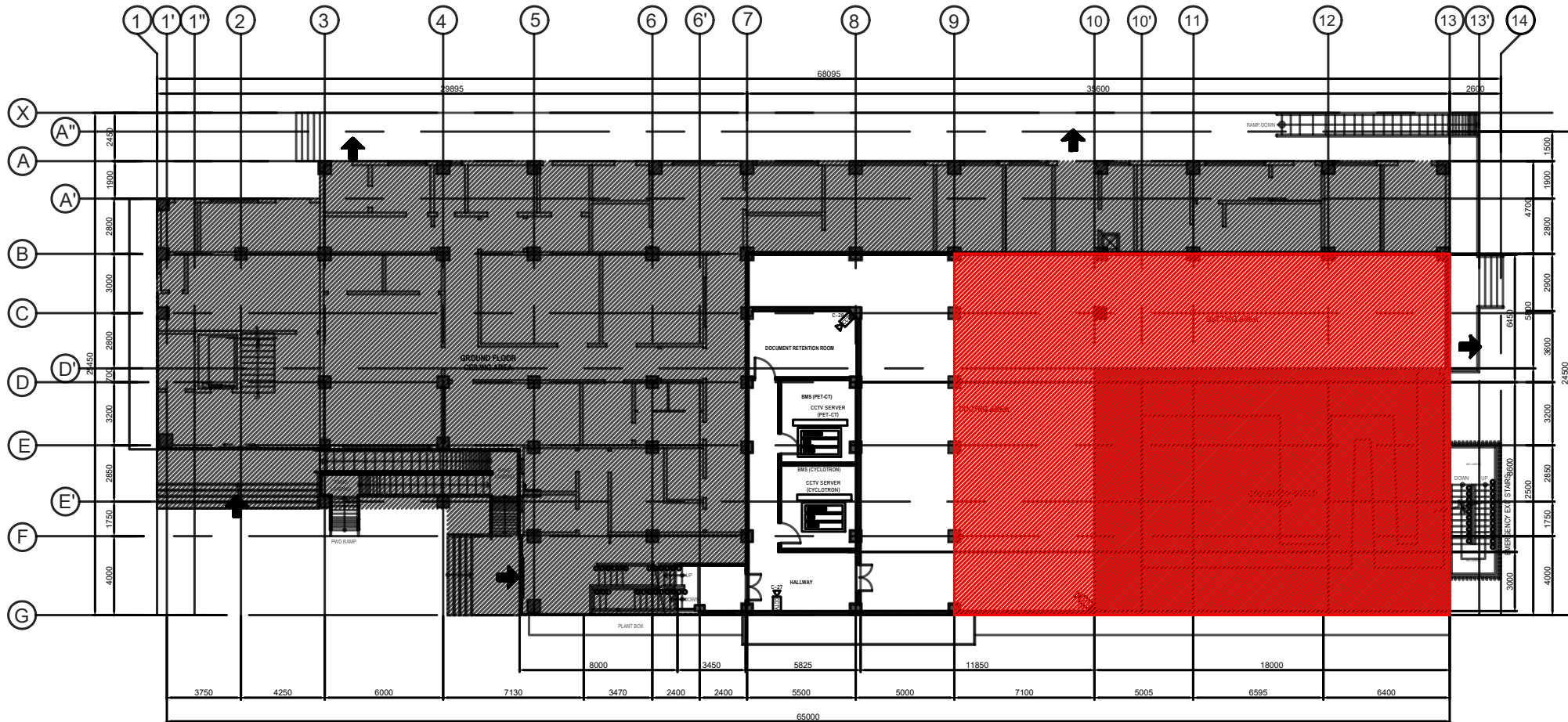


LEGEND	
	INCLUDES WIRES AND ROUGH-INS
	INCLUDES WIRES ONLY

GROUND FLOOR
1
CCTV LAYOUT
 SCALE 1:300mm




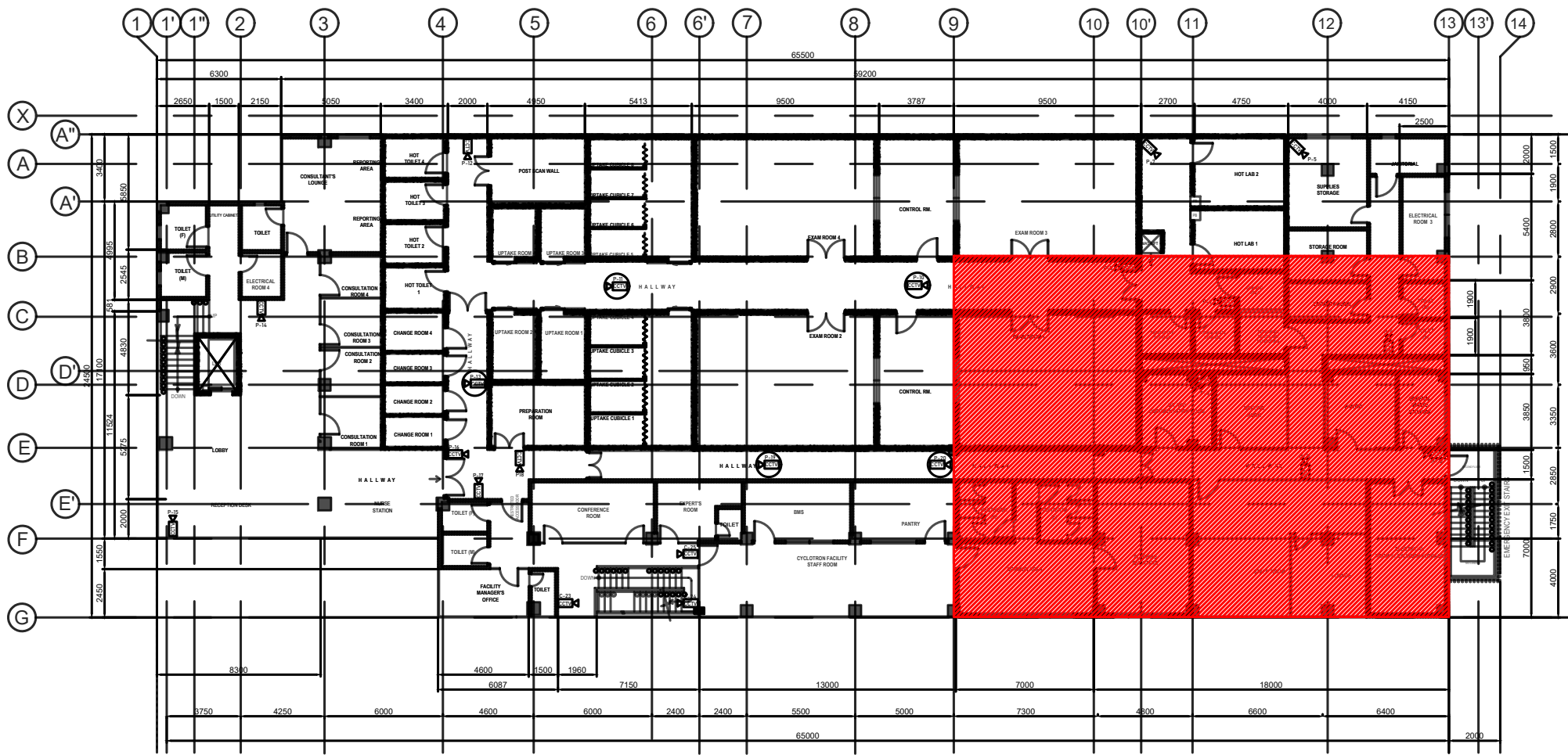
PROJECT TITLE:	SHEET CONTENT/S:	PREPARED BY:	RECOMMENDING APPROVALS:	APPROVED BY:	DRAWN BY:	SHEET NO.
INNOVATING NUCLEAR MEDICINE RESEARCH AND SERVICES: DEVELOPMENT OF EMERGING PET RADIOPHARMACEUTICALS FOR EARLY CANCER STAGING AND ASSESSMENT OF BIOLOGICAL FUNCTIONS IN CANCER CELLS (C.Y. 2023) PHASE 4	-CCTV LAYOUT	<u>ENGR. ROSALINO B. REJAS</u> <small>SSRS, ESS</small> <u>ENGR. ANDREW C. BARRIDA</u> <small>SSRS, ESS</small>	<u>MARIA TERESA L. BORRAS</u> <small>END-USER/SSRS, ITS</small> <u>ENGR. ARTURO F. SALIH</u> <small>SSRS / OIC-ESS</small> <u>PRECIOSA CORAZON B. PABROA, Ph. D.</u> <small>CHEF, NSD</small> <u>VALLERIE ANN I. SAMSON, Ph. D.</u> <small>DEPUTY DIRECTOR</small>	<u>CARLO A. ARCILLA, Ph. D.</u> <small>DIRECTOR</small>	CHECKED BY: DATE:	EC - 3 <small>PAGE NO. OF TOTAL NO. OF PAGES</small> 03 of 12



LEGEND	
	INCLUDES WIRES AND ROUGH-INS
	INCLUDES WIRES ONLY

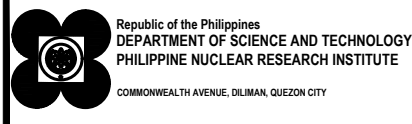
MEZZANINE FLOOR
CCTV LAYOUT
 SCALE 1:1000mm

 <p>Republic of the Philippines DEPARTMENT OF SCIENCE AND TECHNOLOGY PHILIPPINE NUCLEAR RESEARCH INSTITUTE COMMONWEALTH AVENUE, DILIMAN, QUEZON CITY</p>	PROJECT TITLE:	SHEET CONTENT/S:	PREPARED BY:	RECOMMENDING APPROVALS:	APPROVED BY:	DRAWN BY:	SHEET NO.	
	INNOVATING NUCLEAR MEDICINE RESEARCH AND SERVICES: DEVELOPMENT OF EMERGING PET RADIOPHARMACEUTICALS FOR EARLY CANCER STAGING AND ASSESSMENT OF BIOLOGICAL FUNCTIONS IN CANCER CELLS (C.Y. 2023) PHASE 4	-CCTV LAYOUT	<u>ENGR. ROSALINO B. REJAS</u> <small>SSRS, ESS</small> <u>ENGR. ANDREW C. BARRIDA</u> <small>SSRS, ESS</small>	<u>MARIA TERESA L. BORRAS</u> <small>END-USER/SSRS, ITS</small> <u>PRECIOSA CORAZON B. PABROA, Ph. D.</u> <small>CHIEF, NSD</small>	<u>ENGR. ARTURO F. SALIH</u> <small>SSRS / OIC-ESS</small> <u>VALLERIE ANN I. SAMSON, Ph. D.</u> <small>DEPUTY DIRECTOR</small>	<u>CARLO A. ARCILLA, Ph. D.</u> <small>DIRECTOR</small>	CHECKED BY: DATE:	EC - 4 <small>PAGE NO. OF TOTAL NO. OF PAGES</small> 04 - 12

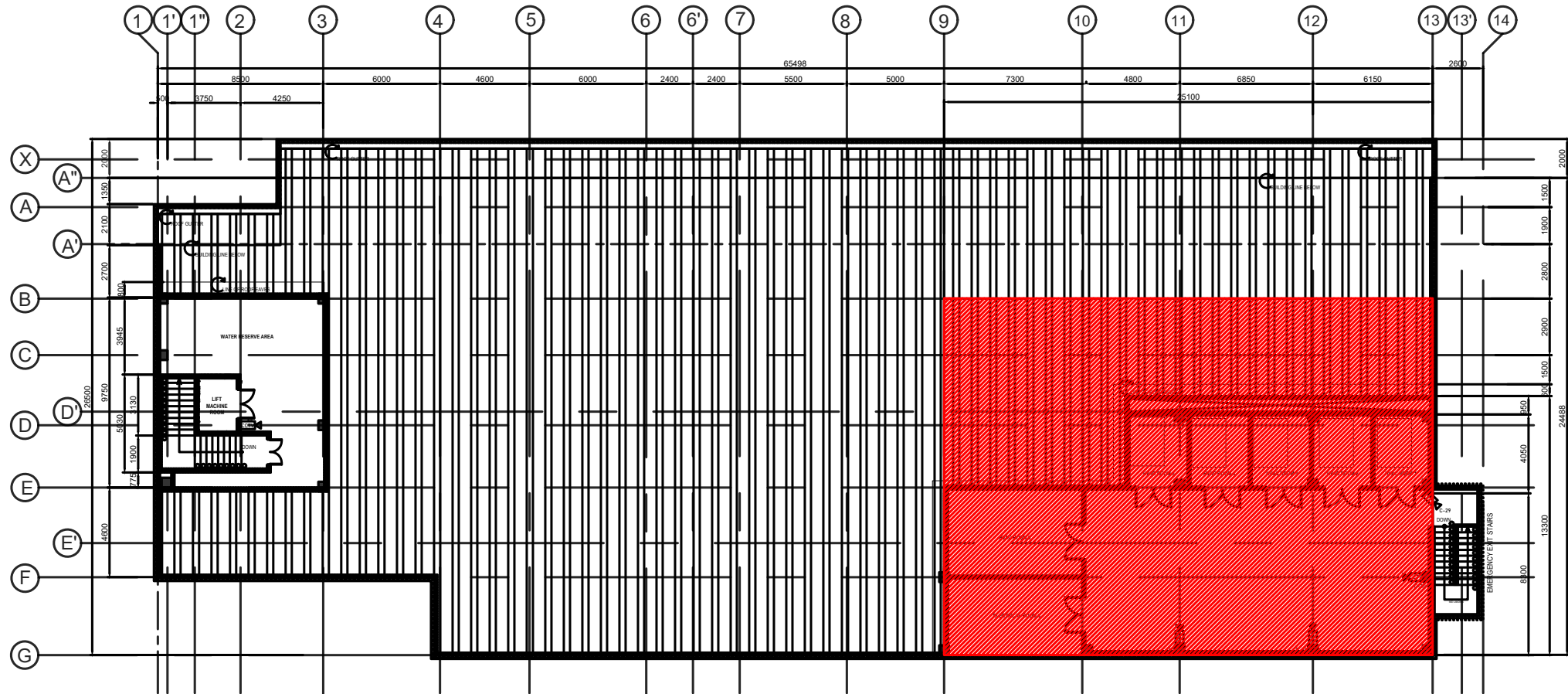


LEGEND	
	INCLUDES WIRES AND ROUGH-INS
	INCLUDES WIRES ONLY

SECOND FLOOR
CCTV LAYOUT
 SCALE 1:200mm

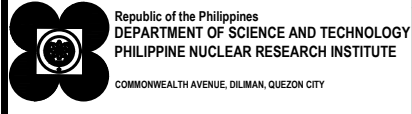


PROJECT TITLE: INNOVATING NUCLEAR MEDICINE RESEARCH AND SERVICES: DEVELOPMENT OF EMERGING PET RADIOPHARMACEUTICALS FOR EARLY CANCER STAGING AND ASSESSMENT OF BIOLOGICAL FUNCTIONS IN CANCER CELLS (C.Y. 2023) PHASE 4	SHEET CONTENT/S: -CCTV LAYOUT	PREPARED BY: <u>ENGR. ROSALINO B. REJAS</u> SSRS, ESS <u>ENGR. ANDREW C. BARRIDA</u> SSRS, ESS	RECOMMENDING APPROVALS: <u>MARIA TERESA L. BORRAS</u> END-USER/SSRS, ITS <u>ENGR. ARTURO F. SALIH</u> SSRS / OIC-ESS <u>PRECIOSA CORAZON B. PABROA, Ph. D.</u> CHIEF, NSD <u>VALLERIE ANN I. SAMSON, Ph. D.</u> DEPUTY DIRECTOR	APPROVED BY: <u>CARLO A. ARCILLA, Ph. D.</u> DIRECTOR	DRAWN BY: CHECKED BY: DATE:	SHEET NO. EC - 5 PAGE NO. OF TOTAL NO. OF PAGES 05 of 12
--	---	---	--	--	--	--

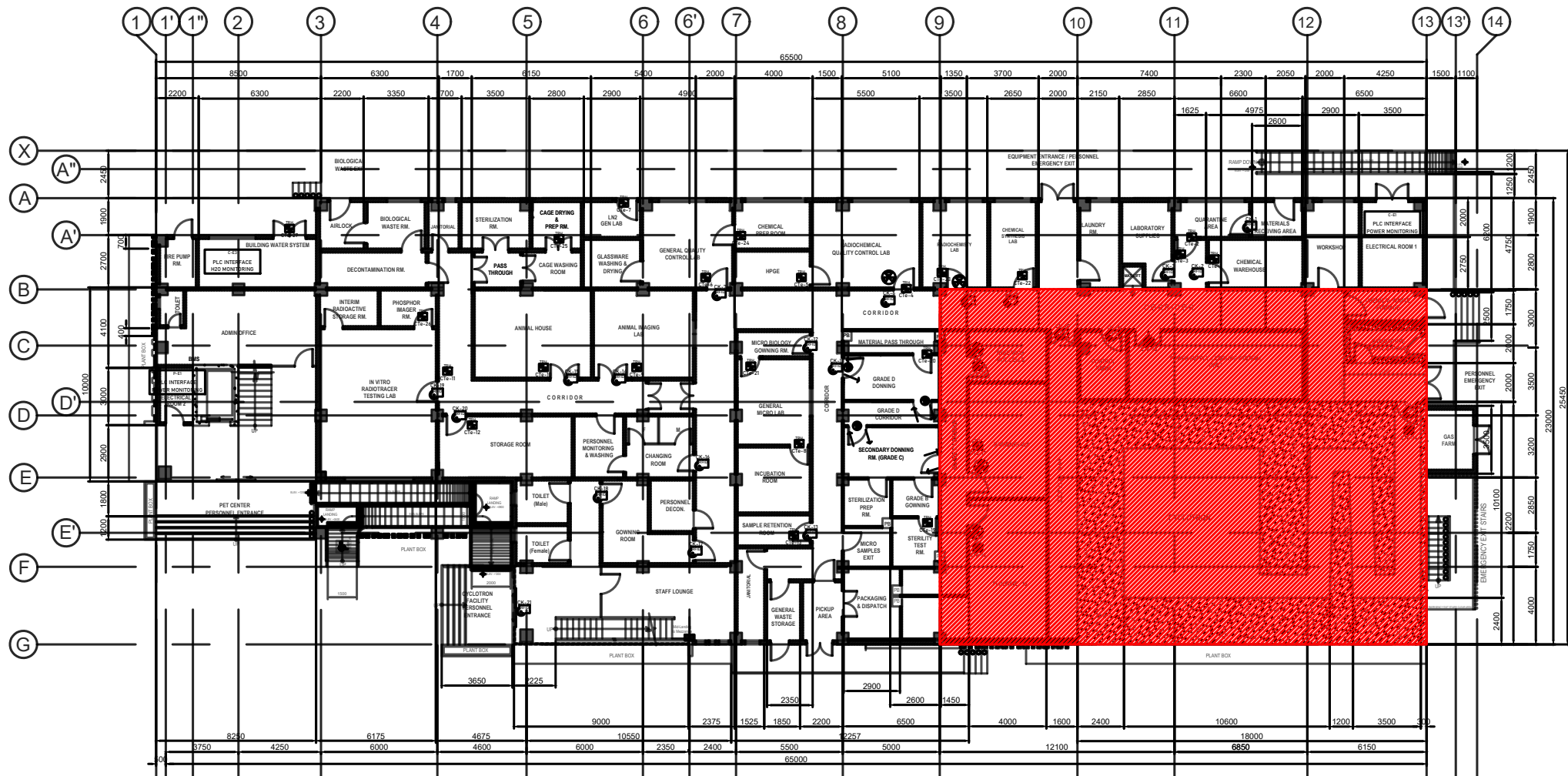


LEGEND	
	INCLUDES WIRES AND ROUGH-INS
	INCLUDES WIRES ONLY

ROOF DECK
CCTV LAYOUT
 SCALE 1:300mm

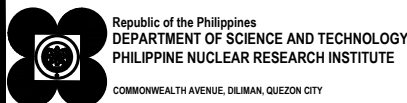


PROJECT TITLE:	SHEET CONTENT/S:	PREPARED BY:	RECOMMENDING APPROVALS:	APPROVED BY:	DRAWN BY:	SHEET NO.
INNOVATING NUCLEAR MEDICINE RESEARCH AND SERVICES: DEVELOPMENT OF EMERGING PET RADIOPHARMACEUTICALS FOR EARLY CANCER STAGING AND ASSESSMENT OF BIOLOGICAL FUNCTIONS IN CANCER CELLS (C.Y. 2023) PHASE 4	-CCTV LAYOUT	<u>ENGR. ROSALINO B. REJAS</u> <small>SSRS, ESS</small>	<u>MARIA TERESA L. BORRAS</u> <small>END-USER/SSRS, ITS</small>	<u>ENGR. ARTURO F. SALIH</u> <small>SSRS / OIC-ESS</small>	CARLO A. ARCILLA, Ph. D. <small>DIRECTOR</small>	EC - 6
		<u>ENGR. ANDREW C. BARRIDA</u> <small>SSRS, ESS</small>	PRECIOSA CORAZON B. PABROA, Ph. D. <small>CHIEF, NSD</small>	VALLERIE ANN I. SAMSON, Ph. D. <small>DEPUTY DIRECTOR</small>		PAGE NO. OF TOTAL NO. OF PAGES 06 of 12

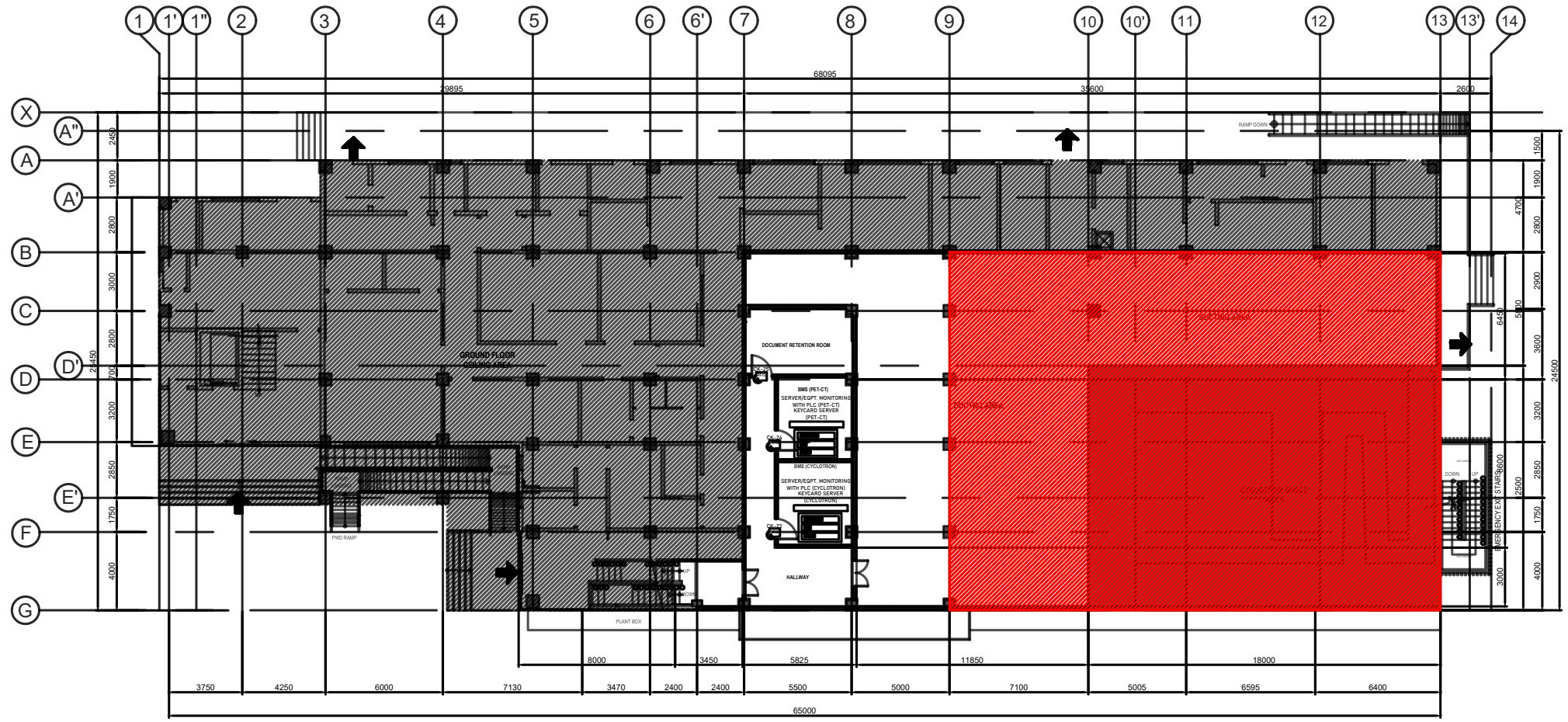


LEGEND	
	INCLUDES WIRES AND ROUGH-INS
	INCLUDES WIRES ONLY

GROUND FLOOR
AUXILIARY LAYOUT
SCALE 1:300mm




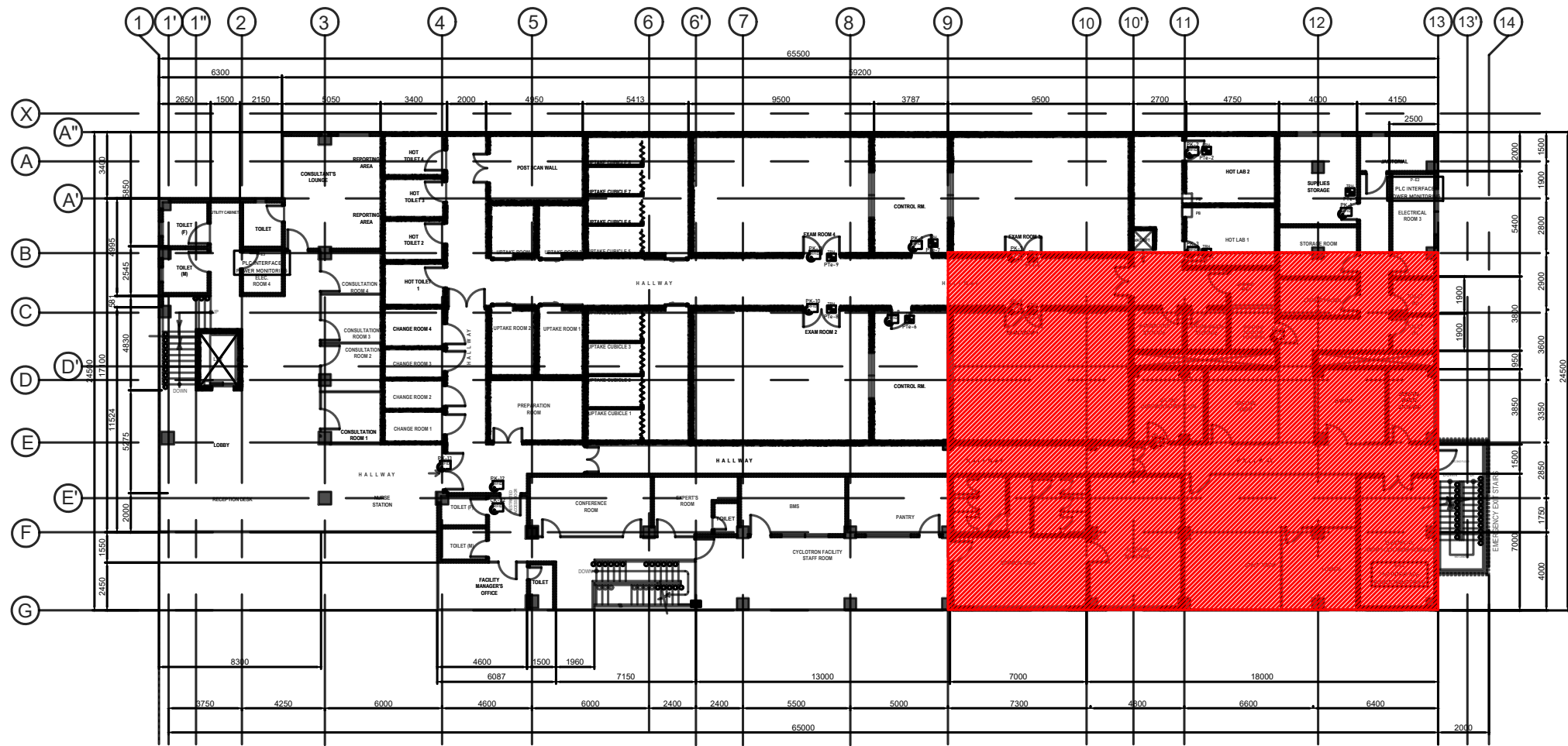
PROJECT TITLE:	SHEET CONTENT/S:	PREPARED BY:	RECOMMENDING APPROVALS:	APPROVED BY:	DRAWN BY:	SHEET NO.
INNOVATING NUCLEAR MEDICINE RESEARCH AND SERVICES: DEVELOPMENT OF EMERGING PET RADIOPHARMACEUTICALS FOR EARLY CANCER STAGING AND ASSESSMENT OF BIOLOGICAL FUNCTIONS IN CANCER CELLS (C.Y. 2023) PHASE 4	-AUXILIARY LAYOUT	ENGR. ROSALINO B. REJAS <small>SSRS, ESS</small>	MARIA TERESA L. BORRAS <small>END-USER/SSRS, ITS</small>	ENGR. ARTURO F. SALIH <small>SSRS / OIC-ESS</small>	CARLO A. ARCILLA, Ph. D. <small>DIRECTOR</small>	EC - 7
		ENGR. ANDREW C. BARRIDA <small>SSRS, ESS</small>	PRECIOSA CORAZON B. PABROA, Ph. D. <small>CHIEF, NSD</small>	VALLERIE ANN I. SAMSON, Ph. D. <small>DEPUTY DIRECTOR</small>		PAGE NO. OF TOTAL NO. OF PAGES 07 of 12



LEGEND	
	INCLUDES WIRES AND ROUGH-INS
	INCLUDES WIRES ONLY

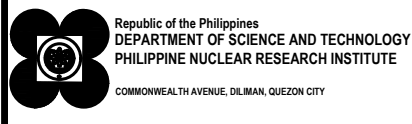
1
 EC-8
 MEZZANINE FLOOR
AUXILIARY LAYOUT
 SCALE 1:300mm

 <p style="font-size: 8px; margin: 0;"> Republic of the Philippines DEPARTMENT OF SCIENCE AND TECHNOLOGY PHILIPPINE NUCLEAR RESEARCH INSTITUTE COMMONWEALTH AVENUE, DILIMAN, QUEZON CITY </p>	PROJECT TITLE:	SHEET CONTENT/S:	PREPARED BY:	RECOMMENDING APPROVALS:	APPROVED BY:	DRAWN BY:	SHEET NO.	
	INNOVATING NUCLEAR MEDICINE RESEARCH AND SERVICES: DEVELOPMENT OF EMERGING PET RADIOPHARMACEUTICALS FOR EARLY CANCER STAGING AND ASSESSMENT OF BIOLOGICAL FUNCTIONS IN CANCER CELLS (C.Y. 2023) PHASE 4	-AUXILIARY LAYOUT	<u>ENGR. ROSALINO B. REJAS</u> <small>SSRS, ESS</small>	<u>MARIA TERESA L. BORRAS</u> <small>END-USER/SSRS, ITS</small>	<u>ENGR. ARTURO F. SALIH</u> <small>SSRS / OIC-ESS</small>	<u>CARLO A. ARCILLA, Ph. D.</u> <small>DIRECTOR</small>	CHECKED BY:	EC - 8
			<u>ENGR. ANDREW C. BARRIDA</u> <small>SSRS, ESS</small>	<u>PRECIOSA CORAZON B. PABROA, Ph. D.</u> <small>CHIEF, NSD</small>	<u>VALLERIE ANN I. SAMSON, Ph. D.</u> <small>DEPUTY DIRECTOR</small>		DATE:	PAGE NO. OF TOTAL NO. OF PAGES
							08 of 12	

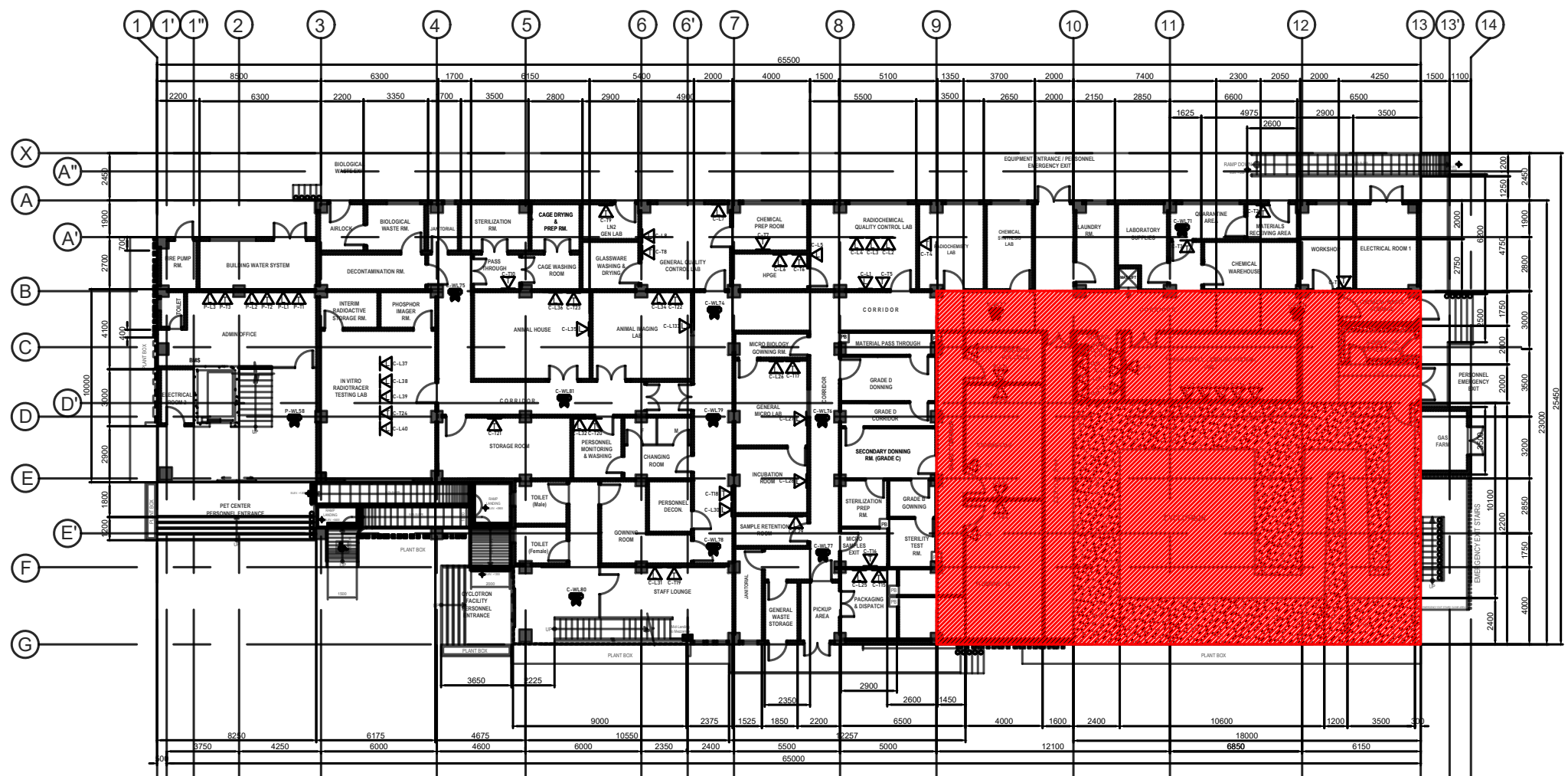


LEGEND	
	INCLUDES WIRES AND ROUGH-INS
	INCLUDES WIRES ONLY

SECOND FLOOR
AUXILIARY LAYOUT
 SCALE 1:100mm



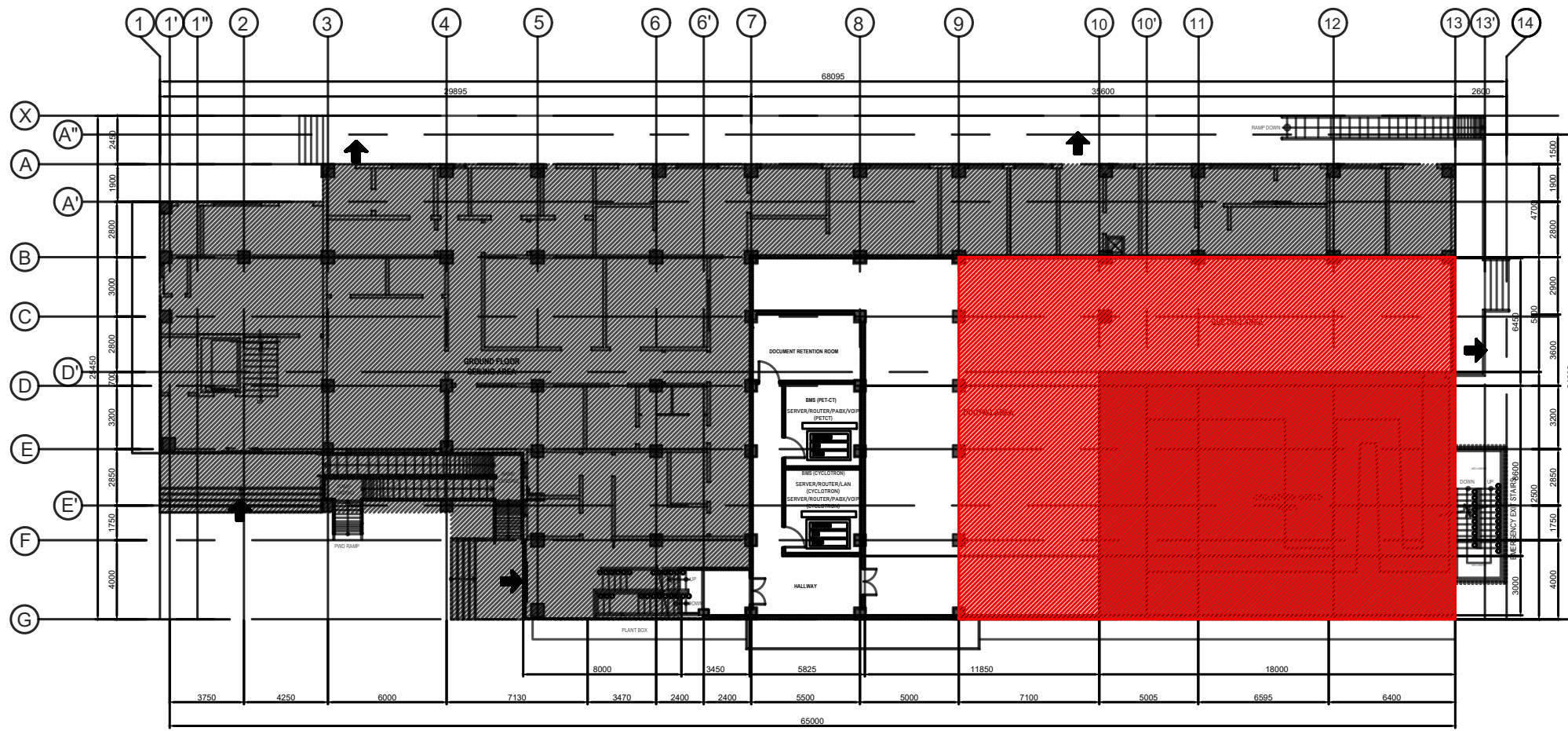
PROJECT TITLE:	SHEET CONTENT/S:	PREPARED BY:	RECOMMENDING APPROVALS:	APPROVED BY:	DRAWN BY:	SHEET NO.
INNOVATING NUCLEAR MEDICINE RESEARCH AND SERVICES: DEVELOPMENT OF EMERGING PET RADIOPHARMACEUTICALS FOR EARLY CANCER STAGING AND ASSESSMENT OF BIOLOGICAL FUNCTIONS IN CANCER CELLS (C.Y. 2023) PHASE 4	-AUXILIARY LAYOUT	<u>ENGR. ROSALINO B. REJAS</u> <small>SSRS, ESS</small>	<u>MARIA TERESA L. BORRAS</u> <small>END-USER/SSRS, ITS</small>	<u>ENGR. ARTURO F. SALIH</u> <small>SSRS / OIC-ESS</small>	CARLO A. ARCILLA, Ph. D. <small>DIRECTOR</small>	EC - 9
		<u>ENGR. ANDREW C. BARRIDA</u> <small>SSRS, ESS</small>	PRECIOSA CORAZON B. PABROA, Ph. D. <small>CHIEF, NSD</small>	VALLERIE ANN I. SAMSON, Ph. D. <small>DEPUTY DIRECTOR</small>		<small>PAGE NO. OF TOTAL NO. OF PAGES</small> 09 of 12



LEGEND	
	INCLUDES WIRES AND ROUGH-INS
	INCLUDES WIRES ONLY


GROUND FLOOR
LAN, TEL & ROUTER LAYOUT
 SCALE: 1:300mm

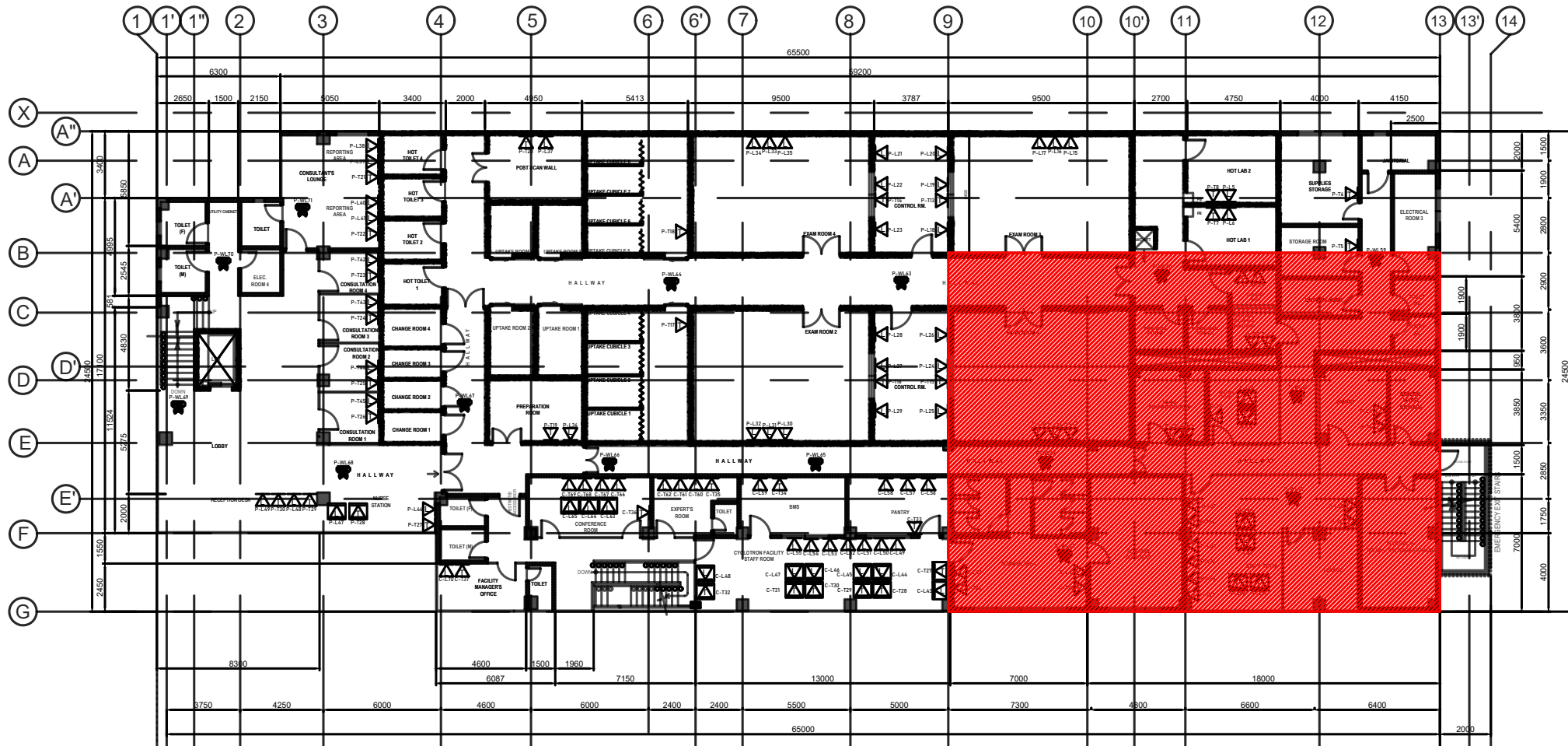
<p style="font-size: 8px; margin: 0;">Republic of the Philippines DEPARTMENT OF SCIENCE AND TECHNOLOGY PHILIPPINE NUCLEAR RESEARCH INSTITUTE COMMONWEALTH AVENUE, DILMAN, QUEZON CITY</p>	PROJECT TITLE:	SHEET CONTENT/S:	PREPARED BY:	RECOMMENDING APPROVALS:	APPROVED BY:	DRAWN BY:	SHEET NO.	
	INNOVATING NUCLEAR MEDICINE RESEARCH AND SERVICES: DEVELOPMENT OF EMERGING PET RADIOPHARMACEUTICALS FOR EARLY CANCER STAGING AND ASSESSMENT OF BIOLOGICAL FUNCTIONS IN CANCER CELLS (C.Y. 2023) PHASE 4	-LAN, TEL, & ROUTER LAYOUT	<u>ENGR. ROSALINO B. REJAS</u> <small>SSRS, ESS</small> <u>ENGR. ANDREW C. BARRIDA</u> <small>SSRS, ESS</small>	<u>MARIA TERESA L. BORRAS</u> <small>END-USER/SSRS, ITS</small> <u>PRECIOSA CORAZON B. PABROA, Ph. D.</u> <small>CHIEF, NSO</small>	<u>ENGR. ARTURO F. SALIH</u> <small>SSRS / OIC-ESS</small> <u>VALLERIE ANN I. SAMSON, Ph. D.</u> <small>DEPUTY DIRECTOR</small>	<u>CARLO A. ARCILLA, Ph. D.</u> <small>DIRECTOR</small>	CHECKED BY:	EC - 10 <small>PAGE NO. OF TOTAL NO. OF PAGES</small> 10 of 12
							DATE:	
							DRAWN BY:	



LEGEND	
	INCLUDES WIRES AND ROUGH-INS
	INCLUDES WIRES ONLY

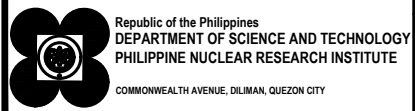
MEZZANINE FLOOR
LAN, TEL & ROUTER LAYOUT
 SCALE: 1:300mm

 <p style="font-size: 8px;">Republic of the Philippines DEPARTMENT OF SCIENCE AND TECHNOLOGY PHILIPPINE NUCLEAR RESEARCH INSTITUTE COMMONWEALTH AVENUE, DILIMAN, QUEZON CITY</p>	PROJECT TITLE:	SHEET CONTENT/S:	PREPARED BY:	RECOMMENDING APPROVALS:	APPROVED BY:	DRAWN BY:	SHEET NO.	
	INNOVATING NUCLEAR MEDICINE RESEARCH AND SERVICES: DEVELOPMENT OF EMERGING PET RADIOPHARMACEUTICALS FOR EARLY CANCER STAGING AND ASSESSMENT OF BIOLOGICAL FUNCTIONS IN CANCER CELLS (C.Y. 2023) PHASE 4	-LAN, TEL, & ROUTER LAYOUT	<u>ENGR. ROSALINO B. REJAS</u> <small>SSRS, ESS</small> <u>ENGR. ANDREW C. BARRIDA</u> <small>SSRS, ESS</small>	<u>MARIA TERESA L. BORRAS</u> <small>END-USER/SSRS, ITS</small> PRECIOSA CORAZON B. PABROA, Ph. D. <small>CHIEF, RSD</small>	<u>ENGR. ARTURO F. SALIH</u> <small>SSRS / OIC-ESS</small> VALLERIE ANN I. SAMSON, Ph. D. <small>DEPUTY DIRECTOR</small>	<u>CARLO A. ARCILLA, Ph. D.</u> <small>DIRECTOR</small>	CHECKED BY:	EC - 11 <small>PAGE NO. OF TOTAL NO. OF PAGES</small> 11 of 12
							DRAWN BY:	
							DATE:	



LEGEND	
	INCLUDES WIRES AND ROUGH-INS
	INCLUDES WIRES ONLY

SECOND FLOOR
LAN, TEL & ROUTER LAYOUT
 SCALE 1:100mm



PROJECT TITLE:	SHEET CONTENT/S:	PREPARED BY:	RECOMMENDING APPROVALS:	APPROVED BY:	DRAWN BY:	SHEET NO.
INNOVATING NUCLEAR MEDICINE RESEARCH AND SERVICES: DEVELOPMENT OF EMERGING PET RADIOPHARMACEUTICALS FOR EARLY CANCER STAGING AND ASSESSMENT OF BIOLOGICAL FUNCTIONS IN CANCER CELLS (C.Y. 2023) PHASE 4	-LAN, TEL, & ROUTER LAYOUT	<u>ENGR. ROSALINO B. REJAS</u> <small>SSRS, ESS</small>	<u>MARIA TERESA L. BORRAS</u> <small>END-USER/SSRS, ITS</small>	<u>ENGR. ARTURO F. SALIH</u> <small>SSRS / OIC-ESS</small>	<u>CARLO A. ARCILLA, Ph. D.</u> <small>DIRECTOR</small>	EC - 12
		<u>ENGR. ANDREW C. BARRIDA</u> <small>SSRS, ESS</small>	PRECIOSA CORAZON B. PABROA, Ph. D. <small>CHIEF, NSD</small>	VALLERIE ANN I. SAMSON, Ph. D. <small>DEPUTY DIRECTOR</small>		
		<small>PAGE NO. OF TOTAL NO. OF PAGES</small> 12 of 12				